



**THE BOARD OF EDUCATION
SCHOOL DISTRICT NO. 50 (HAIDA GWAII)**

2010 TRUSTEE COMMITTEE REPRESENTATIVES

Chairperson: Wayne Wilson
Vice Chairperson: Christine Martynuik

COMMITTEE	REPRESENTATIVE
EDUCATION	
Cultural, District Sports	Lena-Washington
District Resource Centre	Sharon Matthews
Literacy	Elizabeth Condrotte, Sharon Matthews
Professional Development	Elizabeth Condrotte, Sharon Matthews
ABORIGINAL EDUCATION	
Haida Education Council	Sharon Matthews, Wayne Wilson
Haida Language Committee	Lena-Washington, Christine Martynuik
BCSTA Aboriginal Education Committee	Sharon Matthews
Enhancement Agreement Working Committee	Wayne Wilson
FINANCE AND PERSONNEL	
BC Public Schools Employers' Association (BCPSEA)	Christine Martynuik
Labour Management	Christine Martynuik
COMMUNITY RELATIONS	
BC Schools Trustees' Association (BCSTA)	Wayne Wilson, Elizabeth Condrotte
District Parent Advisory Council	Elizabeth Condrotte, Lena-Washington

**MINUTES OF THE REGULAR BOARD MEETING HELD AT
THE DISTRICT ADMINISTRATION OFFICE ON DECEMBER 14, 2010**

PRESENT WERE: Wayne Wilson, Chairperson
Sharon Matthews, Trustee
Elizabeth Condrotte, Trustee
Warren Wesley, Trustee

ALSO PRESENT: Angus Wilson, Superintendent of Schools
Ken Campbell, Secretary Treasurer
Shelley Sansome, Exec Asst/HRA

ABSENT WAS: Christine Martynuik, Vice Chairperson

MEMBERS OF THE PUBLIC: Evelyn von Almassy, HGTA President
Jeff King, QCI Observer
Michael Muller, CUPE President
Sue Brown
Marlene Yasko

1. Call to Order

Chairperson Wilson called the meeting to order at 1907 hours.

2. Approval of Agenda

R10121401 MOTION BY WARREN WESLEY
SECONDED BY SHARON MATTHEWS

THAT the agenda be approved as circulated with the following additions:

3. Farm to School presentation by Elizabeth Condrotte; and
- 7.3 International Initiative.

MOTION CARRIED

3. Presentation: Farm to School

Trustee Condrotte informed the Board of Education of School District No. 50 (Haida Gwaii) that George M. Dawson Secondary and Port Clements Elementary schools are participating in the Farm to School program and have thus been approved to receive produce from local farmers. Schools will be provided with salad bars or any other infrastructure required, in addition to needed assistance. This is a pilot program funded for the remaining of the school year and next year. The program should be sustainable and self sufficient thereafter.

4. Approval of Minutes

R10121402 MOTION BY SHARON MATTHEWS
SECONDED BY ELIZABETH CONDROTTE

THAT the minutes of the regular meeting of November 30, 2010 be approved as circulated.

MOTION CARRIED

5. Rise and Report

5.1 December 14, 2010 In-Camera Board Meeting

The Superintendent reported on property, personnel and student matters from the December 14, 2010 In-camera Board meeting.

6. Strategic and Policy Issues

6.1 Policy 4655 Child Abuse Reporting

R10121403 MOTION BY ELIZABETH CONDROTTE
SECONDED BY WARREN WESLEY

THAT the Board of Education of School District No. 50 (Haida Gwaii) approves Policy 4655 Child Abuse Reporting.

MOTION CARRIED

6.2 Superintendent's Report

R10121404 MOTION BY ELIZABETH CONDROTTE
SECONDED BY WARREN WESLEY

The Board of Education of School District No. 50 (Haida Gwaii) approves the Superintendent's report.

MOTION CARRIED

The chief points of the discussion were as follows:

- Graduation rates have improved but are still below the Provincial average;
- Disparity between genders is negligible;
- Aboriginal graduation rates are above Provincial average.

7. Operational Issues

7.1 November Voucher

R10121405 MOTION BY SHARON MATTHEWS
SECONDED BY ELIZABETH CONDROTTE

THAT the Board of Education of School District No. 50 (Haida Gwaii) received and filed the Accounts Payable and Payroll for the month of November 2010.

MOTION CARRIED

7.2 Community Prevention Education Continuum

Superintendent Wilson presented the Board of Education of School District No. 50 (Haida Gwaii) data from the Community Prevention Education Continuum report indicating methods to work with the community to educate students regarding narcotics and alcohol.

MOTION BY WARREN WESLEY
SECONDED BY SHARON MATTHEWS

THAT the Board of Education of School District No. 50 (Haida Gwaii) accept the Community Prevention Education Continuum report.

MOTION CARRIED

7.3 International Initiative

Superintendent Wilson informed the Board of Education of School District No. 50 (Haida Gwaii) that he was approached by School District No. 91 (Nechako Lakes) regarding providing exchange students from China with an educational tour on Haida Gwaii.

MOTION BY ELIZABETH CONDROTTE
SECONDED BY WARREN WESLEY

THAT the Board of Education of School District No. 50 (Haida Gwaii) direct the Superintendent of Schools to write a letter of interest to the Superintendent of Schools of School District No. 91 (Nechako Lakes), affirming interest in providing an educational tour on Haida Gwaii and requesting further information.

MOTION CARRIED

8. Reports

8.1 Trustee Reports

- Trustee Condrotte reported on her attendance at a Port Clements Parent Advisory Council meeting and a Farm to School meeting;
- Trustee Wesley reported on his attendance at the Trustee Academy held in Vancouver;
- Chairperson Wilson reported on his attendance at the Trustee Academy;
- Trustee Matthews reported on her attendance at Tahayghen Elementary School's 40th anniversary celebration and the leadership meeting.

8.2 Management Reports

i. Superintendent's Report

The Superintendent of Schools reported on his involvement with Haida Child and Family, Ministry of Child and Family Development, a targeted funds meeting, a professional development meeting, a leadership meeting and the Tahayghen Elementary School's 40th anniversary.

ii. Secretary Treasurer

Secretary Treasurer Campbell reported on his involvement with targeted funds, maintenance, and a webinar focusing on the Port Clements multiplex.

9. Information Items

9.1 Trustee Expenditure Report

The Board of Education of School District No. 50 (Haida Gwaii) received and filed the Trustee Expenditure Report as of November 30, 2010.

9.2 Report Released into BC College of Teachers

The Board of Education of School District No. 50 (Haida Gwaii) received and filed the report released regarding the BC College of Teachers.

10. Questions from the public

The Board of Education and members of the public held a question and answer period. The following items were discussed:

- Custodial supplies;
- Cutbacks on sport programs and off-island trips;
- Provincial travel for championships;
- On-island activities;
- Facilitate leaders;
- Drug and alcohol lessons in primary years.

11. Adjournment

R10121406 MOTION BY SHARON MATTHEWS
SECONDARY BY WARREN WESLEY

THAT the Board of Education of School District No. 50 (Haida Gwaii) adjourns the Regular Board meeting at 2028 hours.

MOTION CARRIED

Secretary Treasurer

Chairperson

POLICY 2110

SCHOOL FUNDS

Adopted: November 1999

Revised: January 2008

Recommended Revisions: January 2011

Policy

The Board of Education supports the concept of student fund raising activities for school purposes only. The Board of Education believes that fundraising is a component of a school's efforts to enhance education experiences for students. Fundraising activities should generally be service-oriented and contribute to enhancing school community relations.

All funds are subject to the same accounting and scrutiny as are public funds.

Each school shall create a Principal Trust Account to record funds raised in the school by students, teachers and/or volunteers.

All funds collected are to be included as part of the Principal In-Trust Account.

Principal In-Trust Account balances including revenue and expenses will be reported to the Board office on a quarterly basis and will be included in the financial reporting of the School District.

PROCEDURE

1. Fundraising activities will be consistent with the district's educational philosophy and priorities. This includes fundraising undertaken by other organisations or groups on behalf of students of School District No. 50.
2. All fund raising activities must be approved by the Principal of the School.
3. Field Trips and other activities that require fund raising shall be run from only one school; should more than one school participate in an activity the two schools must meet prior to commencing fundraising activities.
4. All funds that are primarily raised by students, teachers and/or volunteers are to be spent for the benefit of students.
5. Funds raised for specific projects or trips must be spent for those projects or trips. Excess funds will be added to the school's Principal's In-Trust account.
6. No person shall be compensated for conducting fund-raising activities.
7. Priorities for fund raising within the school shall be determined by the Principal in conjunction with staff, students and parents.
8. Funds cannot be collected from parents or students for field trips, supplies or activities which are then paid for by District allocated resources to create a surplus in the Principal In-Trust Account.

Principal's In-Trust Fund Accounting

1. Each school will issue pre-numbered receipts or cash register sales slips for all cash received and will identify the purpose for which the funds are collected.
2. All cash will be deposited at a banking institution as soon as it is practical.
3. All school account disbursements shall be by cheque and will have two signatures, one of which shall be the Principal or Vice-Principal.
4. Vouchers, invoices, and receipts will be retained in support of every expenditure.
5. Monthly bank statements and bank reconciliation's must be available and perused by the Principal on a regular basis.
6. The School District Administration Office will conduct an annual audit of school (non-public) funds (Principals' Trust Accounts).
7. This policy does not apply to funds raised by the Parent Advisory Council.

School District No. 50 (Haida Gwaii)			
Estimated Operating Grant			
Difference between Projected 2010/11 (March)			
and Actual December 2010/11			
	Final Funding December 2010	Preliminary Funding March 2010	Difference
Student Base Allocation	\$4,395,323	\$4,320,468	\$74,854
Supplements for :			
1. Enrolment Decline	\$23,234	\$107,203	-\$83,969
2. Unique Student Needs	\$1,185,254	\$1,345,291	-\$160,037
3. Salary Differential	\$140,211	\$151,871	-\$11,660
4. Unique	\$3,492,823	\$3,491,823	\$1,000
5. Transp	\$299,502	\$299,502	\$0
Funding Protection	\$44,146		\$44,146
Funding Transition	\$73,554	\$73,554	\$0
Holdback	\$57,387	\$0	\$57,387
Total	\$9,711,434	\$9,789,712	-\$78,279

School District No. 50 (Haida Gwaii)

Operating Grant

For 2010/11

December 19, 2010

Student Base Allocation

652.1250	= FTE x	\$6,740	\$4,395,323
0.0000	Distributed Learning	\$5,851	\$0
+ 0.0000	= Home schoolers x	\$250	\$0

Supplements for :

1. Enrolment Decline

This Years FTE	Last Years FTE	Change		
616.1250	629.3125	-13.1875	-2.10%	\$23,234
Supplement				
661.8125	709.875	48.0625	0.00%	\$0
Total				\$23,234

2. Unique Student Needs

a. English as a Second Language

32.00	= ESL FTE x	\$1,340	\$42,880
-------	-------------	---------	----------

b. Aboriginal Education

417.00	= Ab Ed FTE x	\$1,160	\$483,720
--------	---------------	---------	-----------

c. Special Education

0.00	= Level 1 FTE x	\$36,600	\$0
26.00	= Level 2 FTE x	\$18,300	\$475,800
15.00	= Level 3 FTE x	\$9,200	\$138,000

c. Adult Education	10.125	\$4,430	\$44,854	\$1,185,254
--------------------	--------	---------	----------	-------------

3. Salary Differential

a. Differential (d)	\$565	Supplied by MOE
---------------------	-------	-----------------

b. Estimated number of Teachers (t)	FTE / 18 =	36.792
-------------------------------------	------------	--------

c. Supplement	d x t	\$140,211
---------------	-------	-----------

4. Unique Geographic Factors.....	\$3,492,823
-----------------------------------	-------------

5. Transportation & Housing.....	\$299,502
----------------------------------	-----------

Funding Protection	\$44,146
--------------------	----------

Funding Transition	\$73,554
--------------------	----------

Holdback	\$57,387
----------	----------

2010/2011 Operating Grant	\$9,711,434
---------------------------	-------------

2010/11 Interim Operating Grant Full Year Summary Following the September 2010 Enrollment Count
 School District 50 Haida Gwaii

Enrollment-Based Funding (Sept 2010)	Enrollment	Funding Level	Total Funding
Total School-Age FTE:	652,1250		\$4,395,323
Standard (Regular) Schools	652,1250	\$6,740	\$4,395,323
Continuing Education (Sept only)	0.0000	\$6,740	\$0
Distributed Learning (Sept only)	0.0000	\$5,851	\$0
Alternate Schools	0.0000	\$6,740	\$0
Home Schooling	0	\$250	\$0
Course Challenges	0	\$211	\$0

Unique Student Needs, Total			
Level 1 Special Needs	0.0	\$36,600	\$1,185,254
Level 2 Special Needs	26.0	\$18,300	\$475,800
Level 3 Special Needs	15.0	\$9,200	\$138,000
English as a Second Language	32.0	\$1,340	\$42,880
Aboriginal Education	417.0	\$1,160	\$483,720
Adult Education	10,1250	\$4,430	\$44,854

Supplement for Salary Differential	Estimated # of Educators:	Differential:	
FTE School Age & Adult FTE (Sept 2010):	36,792		\$565
Supplement:	662,2500	FTE Distribn:	\$119,424
			\$140,211

Enrollment-Based Funding (Feb 2011)**	Enrollment	Funding Level	Total Funding
Continuing Education FTE	0.0000		\$0
School-Age	0.0000	\$6,740	\$0
Adult Education	0.0000	\$4,430	\$0
Distributed Learning FTE	0.0000		\$0
K-Grade 9	0.0000	\$2,926	\$0
Grade 10-12	0.0000	\$5,851	\$0
Adult Education	0	\$4,430	\$0
Special Needs Enrollment Growth FTE	0.0		\$0
Level 1 Special Needs	0.0	\$18,300	\$0
Level 2 Special Needs	0.0	\$9,150	\$0
Level 3 Special Needs	0.0	\$4,600	\$0
Newcomer Refugees FTE	0.0000		\$0
English as a Second Language	0.0	\$3,370	\$0
		\$670	\$0

Total 2010/11 Full Year Operating Grant (including estimates for February and May 2011)**	
Operating Grant from Ministry of Education**	\$9,711,434
Estimated 2010/11 Operating Grant from INAC	\$6,328,192
	\$3,383,242

**Note: Highlighted amounts are estimated and will be updated following the February and May enrollment counts.

Supplement for Enrollment Decline (based on Sept enrollments) (excludes Kindergarten and Continuing Education)			
2010/11 School-Age FTE	2009/10 School-Age FTE*	Enrollment Change	
616,1250	629,3125	-13,1875	-2.1%
*Includes adjustments in enrollments made subsequent to March 2010			
Decline between 1% and 4% of previous year's FTE:		\$3,370	\$23,234
Supplement = Eligible Decline x			
Decline greater than 4% of previous year's FTE:		\$5,055	\$0
Supplement = Eligible Decline x			
Significant Cumulative Enrollment Decline			
2009/10 School-Age FTE	2007/08 School-Age FTE	Enrollment Change	
661,8125	709,8750	-48,0625	-6.8%
Supplement for Enrollment Decline, Total			\$23,234

Supplement for Unique Geographic Factors	
Supplement for Transportation and Housing	\$3,492,823
Summer Learning	\$299,502
Funding Protection	\$0
Formula Transition	\$44,146
Holdback Allocation	\$73,554
Other	\$57,387
	\$0

Enrollment-Based Funding (May 2011)**	Enrollment	Funding Level	Total Funding
Continuing Education FTE	0.0000		\$0
School-Age	0.0000	\$6,740	\$0
Adult Education	0.0000	\$4,430	\$0
Distributed Learning FTE	0.0000		\$0
K-Grade 9	0.0000	\$1,950	\$0
Grade 10-12	0.0000	\$5,851	\$0
Adult Education	0	\$4,430	\$0



THE BOARD OF EDUCATION
SCHOOL DISTRICT NO. 50 (HAIDA GWAI)

FIELD TRIP REPORT

To: Board of Education
From: Angus Wilson, Superintendent of Schools
Date: January 25, 2011
Re: Field Trip Report

School	Description	Date
Agnes L. Mathers	Ski trip, Terrace	March 10 - 14, 2011
Agnes L. Mathers	Europe Trip	March 9 – 26, 2011



**BOARD OF EDUCATION
SCHOOL DISTRICT NO. 50
(HAIDA GWAI/QUEEN CHARLOTTE)**

FIELD TRIP APPLICATION

Please complete this application and forward to the Superintendent of Schools (a copy will be returned to you as confirmation)	
Sponsor Teacher: Mr. Cochrane	School: Agnes L. Mathers School
Name of Field Trip (name of event, program / team, etc): 2011 Winter Ski Trip	Dates of Field Trip: March 10-14, 2011
Number of Students Participating: 11	Number of Chaperones: 3
Names of Teachers Involved: Mr. Cochrane	

Objectives of Field Trip (curriculum relatedness):
1) The meet the Physical Education Outcomes in the area of winter activities.

Names of Participating Students:	
Megan Ives	Evan Garrett
Hannah Putterill	Aiden Falconbridge
David Putterill	Christine Salanski
Matthew Servatius	Farrah Falconbridge
Sarah Hunt	Rachel Hageman
Aaron Tanner	

Names of Chaperones:	
Behn Cochrane	Judy Foster
Roberta Wagonstein	

Accommodations:
Ferry, Hotel (Sandman - Terrace, BC)

Travel Plans:
Ferry from Sandspit to Skidegate to Prince Rupert - return trip.
Personal vehicles to and from ferry / Terrace.

Safety Precautions:
See attached emergency plan.

Communication Plan:
 Communication through Mr. Cochrane to parents/school via cell phone/hotel.
 Check-ins by phone nightly.

Estimate of Expenses		Estimate of Income	
Transportation Costs	1423.00	Fundraising	1788.00
Substitute Costs		Direct Cost to Students	850.00
Accommodation	1864.40	School Funds	1000.00
Food	1350.00	Gwaii Trust	2000.00
Other	1001.00	Other	
Estimated Total Cost	\$5638.40	Estimated Total Income	\$5638.40

Itinerary for Each Day	
Date:	Itinerary:
Thursday, March 10	Ferry to Rupert @ 11pm
Friday, March 11	Travel to Terrace, Ski Shames Mountain
Saturday, March 12	Ski Shames Mountain
Sunday, March 13	Ski Shames Mountain 3pm Leave Terrace for Ferry 10 pm Board the Ferry
Monday, March 14	8am Arrive Sandspit.

Bob Carter
 Applicant's Signature

Jan. 17/11
 Date

A. Lavoie
 Principal's Approval

Approval or Confirmation

 Superintendent of Schools

 Date



SCHOOLS ON SNOW

PRICES AND AVAILABILITY

2010-2011 WINTER SEASON

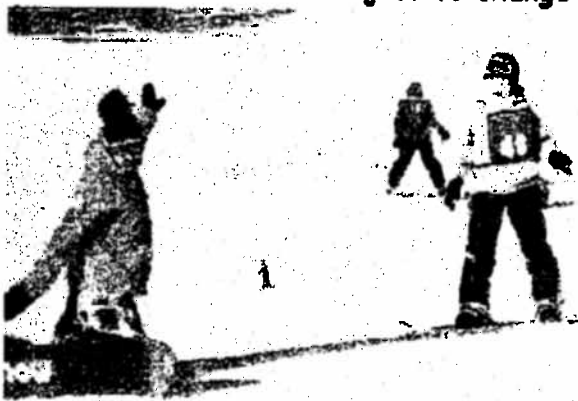


COME & EXPERIENCE THE MOUNTAIN

2010-2011 PROGRAM	FULL DAY PRICES "PACKAGE A"	HALF DAY PRICES "PACKAGE B"
All-Inclusive Package*	\$35.00	\$30.00
Skills Assessment/Lesson**	\$13.00	13.00
Lift Ticket	\$12.00	\$9.00
Ski Rentals	\$10.00	\$8.00
Snowboard Rentals	\$10.00	\$8.00
Lunch Program***	\$7.00	\$7.00

- All-inclusive package includes: lift ticket, skills assessment and/or lessons, and complete ski or snowboard rentals.
- ALL students will be required to complete a skills assessment. Based on these results, lesson requirements will be decided by instructors.
- Lunch program options are included in confirmation package.

Prices are subject to change without notice, all prices include H.S.T.



AVAILABILITY:

DATES ARE ON A FIRST COME FIRST SERVE BASIS, DAILY GROUP SIZES ARE LIMITED.

Shames Mountain Ski Corporation

4544 Lakesle Ave. Box 119

Terrace, BC V8G 4A2

Phone: 250-635-3773, Fax: 250-635-9773, E-mail: shames.admin@telus.net



**BOARD OF EDUCATION
SCHOOL DISTRICT NO. 50
(HAIDA GWAII/QUEEN CHARLOTTE)**

Policy 3500-3

FIELD TRIP APPLICATION

Please complete this application and forward to the Superintendent of Schools
(a copy will be returned to you as confirmation)

Sponsor Teacher: Ms. Claudette Lavoie	School: Agnes L. Mathers
Name of Field Trip: Europe Trip 2011	Dates of Field Trip: March 9 - 26, 2011
Number of Students Participating: 13	Number of Chaperones: 7
Names of Teachers Involved: Ms. Lavoie	

Objectives of Field Trip (curriculum relatedness):

To broaden the students world view and to examine environmental issues world-wide by discussing issues in each country. Students will gain a broadened approach to life at home and how we exist in the global community. Students will explore culture, history, art, health, and environmental issues in countries visited. By promoting critical thinking skills, observation, and questioning, as well as a host of other skills, ALM Europe trip is helping to produce a generation of well-informed, inquisitive community members. In the fast-paced world that our youth are faced with, these types of skill-sets will assist them in the future.

Another constitutional goal the ALM - Europe trip will strive to address is the importance of conserving and sustaining the land and marine ecosystem and archaeological sites of the islands. Environmental and cultural issues are a huge focus of this trip. Our group will discuss issues of high ecological importance such as global climate change in order to draw links between local and global environmental concerns. ALM - Europe trip group will incorporate these perspectives in looking at the unique environment of Haida Gwaii and its benefit to promoting health and well-being.

Names of Participating Students:

[REDACTED]	[REDACTED]
[REDACTED]	[REDACTED]
[REDACTED]	[REDACTED]
[REDACTED]	[REDACTED]
[REDACTED]	[REDACTED]
[REDACTED]	[REDACTED]
[REDACTED]	[REDACTED]
[REDACTED]	[REDACTED]
[REDACTED]	[REDACTED]
[REDACTED]	[REDACTED]

Names of Chaperones:	Claudette Lavoie
Holly Berg	Laurel MacNeil
Mandy Wesley	Marlene Yasko
Cara Johnson	Sue Brown

Accommodations:

All inclusive trip. Tourist grade hotels or better.

Travel Plans:

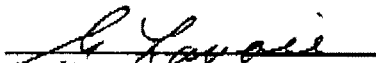
Leave Sandspit Airport March 9, 2011. Meet tour guide Vancouver Airport. Fly to Paris, follow guided tour through Europe. Return from Athens to Sandspit March 26, 2011

Safety Precautions. 1 Chaperone per 2 students. Level 1 first aid attendant.

Communication Plan:
 E-mail communication to ALM Office (daytime) or for emergency evening communication call Marylynn Hunt to disseminate information. Daily e-mail check-ins with the school.

Estimate of Expenses		Estimate of Income	
Trans. & Accommodation Costs	\$102,810.00	Fundraising/ Direct Cost to Students	\$105,310.00
Substitute Costs - 7 x SEA Hrs	\$ 200.00		
Food	\$6600.00	School Funds	\$1,300.00
		Other - PAC Funds	\$1,000.00
		Other - Gwaii Trust	\$2000.00
Estimated Total Cost:	109,610.00	Estimated Total Income	\$109,610.00

Itinerary for Each Day	
Date:	Itinerary:
Mar. 9/11	Leave Sandspit airport to Scotland.
Mar. 10/11	Guided walking tour of Edinburgh.
Mar. 11/11	Guided walking tour of Edinburgh Castle
Mar. 12/11	Sightseeing Tour of Lake District.
Mar. 13/11	Transfer to London via Stratford - Guided tour of London.
Mar. 14/11	Guided tour of Stonehenge and Bath.
Mar. 15/11	Visit the Tower of London & London Eye - Transfer to Canterbury.
Mar. 16/11	Transfer to Dover - Visit Vimy Ridge- Transfer to Normandy.
Mar. 17/11	Visit Juno Beach Centre/Caien Memorial: Museum of Peace.
Mar. 18/11	Guided sightseeing of Paris- Notre Dame Cathedral.
Mar. 19/11	Excursion to Versailles.
Mar. 20/11	Visit Adventureland - EuroDisney.
Mar. 21/11	Visit Louvre Museum
Mar. 22/11	Train to Amsterdam - Canal Cruise.
Mar. 23/11	Guided tour of Amsterdam - Visit Anne Frank House.
Mar. 24/11	Transfer to airport.
Mar. 25/11	Arrive in Toronto.
Mar. 26/11	Arrive home in Sandspit.


 Applicant's Signature

January 11, 2011
 Date


 Principal's Approval

Approval or Confirmation	
Superintendent of Schools	Date



Tour Fee Details for *From Scotland to the Netherlands*

Tour length:	16 Days, 14 Overnights
Requested departure date:	Wednesday, March 9, 2011
Requested return date:	Thursday, March 24, 2011
Requested departure city:	Sandspit
Free place ratio:	6:1

Pre-Spring Program Fees – Sandspit Gateway

Based on 35 plus paying participants per bus	\$4180
Based on 30 - 34 paying participants per bus	\$4265
Based on 25 - 29 paying participants per bus	\$4385

The above program fees are valid for all participants registered before December 31" 2009.

Additional Fees

All Inclusive Insurance Plan:	\$149
Departure Fees (<i>subject to change</i>):	\$593
Weekend Supplement:	\$0
Adult Supplement (<i>for participants 23 and over</i>):	\$570

All additional fees are subject to change.

The above pricing and itinerary are subject to EF's 2011 Booking Conditions and Release and Agreement, located in the Participant Application booklet or at www.ef-tours.ca/lbc. Please be certain to review these terms as they contain important information regarding payment deadlines for your tour.

This tour was custom designed for you by Rosa Ferraro on Thursday, October 29, 2009. Once you have reviewed your itinerary and price quote and found it to your satisfaction, please complete and sign the attached Customized Tour Agreement form. Once this is received, EF will activate your tour and website.



Tour Highlights and Details

Overnight stays:

Edinburgh	(2)
Lake District	(1)
London	(3)
Normandy Region	(1)
Paris	(5)
Amsterdam	(2)

Comprehensive sightseeing tours led by an expert local guide of the following:

Guided Wordsworth walk
 Guided sightseeing of London
 Guided sightseeing of Paris
 Guided visit to Versailles
 Guided sightseeing of Amsterdam

Entrances included to the following sites:

Headsets Europe
 Ann Hathaway's House
 Shakespeare's Birthplace
 Cecilia Colmand Pottery Gallery
 Tower of London
 London Eye
 Vimy Memorial
 Juno Beach Centre
 Caen Memorial
 Versailles Palace & Gardens
 Fragonard Musee du Parfum
 Eurodisney
 Louvre
 Van Cleef & Arpels Diamon Boutique
 Anne Frank's House
 Ghost Walk
 Canal Cruise
 Stonehenge and Bath

Optional Excursions:

OP Volendam and Zaanse Schans \$ 50

Optional excursion prices are based on 20 paying participants and may be purchased until 50 days prior to departure or on tour at an increased price. The prices of optional excursions are subject to change.

Included in the Program Fee:

- Round trip airfare
- Transfers to and from the airport and hotel and between destination cities (as per program itinerary)

- Overnight stays in first-class, superior tourist class or tourist class hotels (all with private bathrooms)
- Continental breakfast daily
- Dinner daily
- Full-time services of an EF Tour Director

Not included in the Program Fee:

- Customary gratuities for your tour director, local guide and driver
- Porterage
- Personal Insurance
- Beverages and lunches
- Public transportation to free time activities



Educational Tours

From Scotland to the Netherlands

A private tour designed by Claudette Lavoie, in conjunction with EF Customized Tours

Requested departure date: Wednesday, March 9, 2011

(Dates below are subject to change. Required date flexibility of 2 days on either side of requested departure date)

Day 1	Wednesday, March 9, 2011
--------------	---------------------------------

Board your flight to Scotland!

Day 2	Thursday, March 10, 2011
--------------	---------------------------------

Arrival in Glasgow

Touch down in Glasgow, Scotland's largest city. Taking its name from the Celtic for "The dear, green place" Glasgow has a variety of stunning 19th century architecture and monuments to match its modern city status.

Transfer to Edinburgh region

Arrive in the Edinburgh region, and admire the rolling hills and dazzling seascapes that surround the Scottish capital. The entire city is built on a series of extinct volcanoes providing an almost lunar environment complemented by varied and subtle architecture.

Walking tour of Edinburgh

Edinburgh provided the setting for Dr. Jekyll and Mr. Hyde. Stroll through Charlotte Square, pass by the homes of Alexander Graham Bell and Robert Louis Stevenson, and view a monument to Robert Burns, Scotland's national poet. From here, cross to the Royal Mile to learn more about this charming city's history.

Overnight in Edinburgh

Day 3	Friday, March 11, 2011
--------------	-------------------------------

Guided sightseeing of Edinburgh

Begin your tour in the 'New Town' with its Georgian splendor and famous residences. You will also be able to get a panoramic view of the city from Calton Hill as well as photos of Holyroodhouse Palace, once home of Mary Queen of Scots. Your tour ends at Edinburgh Castle, set imperiously at the top of the Royal Mile.

Edinburgh Castle

Approach the formidable hilltop perch of the castle from the Royal mile. Once home to Mary Queen of Scots, it is now the resting place of the Stone of Scone, a coronation stone returned from Westminster Abbey in London to the Scots in 1997, as well as Europe's oldest crown jewels. From atop the castle, you can see across the Firth of Forth to Fife!

Guided Ghost Walk

This evening, take a guided Ghost Walk. Learn about some of Edinburgh's scariest moments in history—complete with hangings, apparitions and visits from the grave—as you wander through the winding streets of the Old Town.

Overnight in Edinburgh

Day 4**Saturday, March 12, 2011****Guided Wordsworth walk**

Join your local guide on a nature walk through the fells that inspired the poems of William Wordsworth. During the hike you will visit Dove Cottage, the poet's home from 1799 to 1803. You will also visit Rydal Mount, his home from 1813 until his death in 1850. It was here that Wordsworth lived out his enduring philosophy of "plain living but high thinking".

Tour director-led sightseeing of the Lake District

Discover the deep grooves of history that give shape to the Lake District, Britain's largest park. On this half-day excursion, your tour director will take you through scenic countryside. You'll learn about the transformation of the Lake District from prehistoric periods, through medieval and Victorian eras, to the present.

Free time in the Lake District*Overnight in Lake District***Day 5****Sunday, March 13, 2011****Transfer to London via Stratford****Tour director-led sightseeing of Stratford**

"It is something, I thought, to have seen the dust of Shakespeare." Discover what inspired Washington Irving's famous words as you tour Stratford-upon-Avon, where Shakespeare was born, raised, and buried. Step back into the Elizabethan age as you visit the half-timbered home in which the Bard was born, as well as the Anne Hathaway Cottage, a picturesque thatched farmhouse where Shakespeare's wife spent her childhood.

Guided sightseeing of London

A local guide leads you on a panoramic tour of London. Begin in Grosvenor Square; site of the U.S. embassy and the house where Eisenhower once lived, this area is sometimes called "Little America." Continue to Hyde Park Corner, located at the southeast corner of Hyde Park, one of London's largest parks. At bustling Piccadilly Circus, the intersection of five busy streets, check out the bright lights and big city displays, before heading to Trafalgar Square, site of Nelson's Column, built to commemorate his 1805 victory in the Battle of Trafalgar. Pass Speaker's Corner, where anyone with something to say is invited to speak his mind. Snap a photo of the Houses of Parliament and continue along London's South Bank for views of the famous Tower of London and London Bridge. Stroll across the Millennium Bridge for an orientation of St. Paul's Cathedral, the magnificent 17th-century Baroque church designed by Sir Christopher Wren. Finally, witness a London tradition-the Changing of the Guard (subject to scheduling).

Visit Cecilia Colmand Pottery Gallery*Overnight in London***Day 6****Monday, March 14, 2011****Excursion to Stonehenge and Bath**

Arguably, nowhere in Britain has created more debate than the simple ring of stones that dominate the gentle chalk plains of Wiltshire. Archaeologists remain baffled as to just how Stonehenge was created and what it represents. From here continue on to the Georgian splendor of Bath. Settled by the Romans over 2,000 years ago, the city underwent a renaissance during the 18th century. Today is truly an opportunity to observe the character of English life while contemplating the ancient secrets of her past.

Evening theater

Participate in London's vibrant drama scene as you attend an evening theater performance in the West End. London has over 80 mainstream theaters—the largest array in the world—featuring everything from traditional classics to cutting edge works by new writers.

*Overnight in London***Day 7****Tuesday, March 15, 2011****Visit the Tower of London**

The history of London comes to life at this complex of 20 towers surrounding Tower Green. The oldest tower, known as the White Tower, was completed in 1097, when it was the tallest building in London. The Tower buildings have had many uses over the years; perhaps the most infamous was as a jail for political prisoners, not to mention two of Henry VIII's wives. The most famous exhibits at the Tower are the British Crown Jewels. Aside from a short interruption during WWII, these splendid haubles have been locked behind the Tower's walls for centuries.

The London Eye

Board the London Eye—built to celebrate the millennium, the world's largest Ferris wheel offers you the chance to take it all in at once. In its short existence the London Eye has become the most popular UK visitor attraction, with over 3.5 million visitors a year.

Free time at Harrod's Department Store

London's most famous department store began as a humble family grocery in 1849. Today the building has a staff of over 3,000. This famous store has-or can get—anything you could ever want, from socks to elephants. Make sure to visit the Egyptian food hall on the ground floor, laid out in the 1970s, as well as the toy department where the Queen has shopped for her grandchildren.

Transfer to Canterbury

Travel to Canterbury, an ecclesiastical center of England for well over 800 years. The city became an important pilgrimage center after Thomas à Becket, archbishop of Canterbury, was murdered by four knights of his close friend King Henry II in 1170. Later, Chaucer cast more spotlight on the city with his *Canterbury Tales*, which chronicle the stories of pilgrims bound for Becket's shrine.

Visit Canterbury Cathedral*Overnight in Canterbury***Day 8****Wednesday, March 16, 2011****Transfer to Dover**

Transfer to Dover where you will board a ferry to cross the English Channel. This 22-mile stretch of water is the shortest point between England and continental Europe and has been a focal point in Britain's coastal defenses. Look for the famous White Cliffs of Dover behind you as you leave the English shore. Upon arrival in Calais, France, you will be taken through northeastern France en route to Paris.

Visit Vimy Ridge

Walk along Vimy Ridge, where in 1917, Canadian troops came together to accomplish what larger British and French forces had failed to do, and what would become a defining moment in the first World War. See where these brave soldiers charged over the ridge, marching under continuous, heavy fire and cleverly isolating the German troops in their dugouts. A towering, white marble monument now marks Hill 145, the place where the capture of Vimy Ridge ended in a bayonet charge against machine-gun nests. Learn more about this stunning victory that Brigadier-General A.E. Ross called "the birth of a nation."

Transfer to Normandy

Transfer to Normandy, location of many of the battles that turned the course of World War II. Despite its connection with major military events, Normandy is also a region of scenic beauty with elegant landscapes and patchwork fields as well as the majesty of its two major towns-Caen and Rouen.

Overnight in Normandy Region**Day 9****Thursday, March 17, 2011****Visit to Juno Beach Centre**

Visit Juno Beach Centre, the first memorial of its kind for Canadian veterans of WWII. The Centre was conceptualized by Canadian veterans who fought in the June 6, 1944 D-Day invasion of Normandy and stands at Courseulles-sur-Mer, the site of the invasion. The Centre is an educational facility designed to teach Canadians more about Canada's role in the war, whether on land, sea or air.

Visit to Caen Mémorial: Museum of Peace

Pay tribute to WWII troops who fought on the beaches of Normandy as you visit the Caen Mémorial. You'll see a short film about the D-Day invasion, followed by a slide show on WWII. A third audio-visual presentation recounts the wars in Korea, Afghanistan, and Vietnam, as well as the continuing quest for world peace. Afterwards, tour the museum and see displays that depict pre-WWII Europe and trace the events that eventually led to the outbreak of war. Take time to walk through the Nobel Peace Prizewinners' Gallery, a gallery that highlights the accomplishments of the men and women who struggled for peace.

Transfer to Paris***Overnights in Paris*****Day 10****Friday, March 18, 2011****Guided sightseeing of Paris**

Discover the city on the Seine during your bus tour. Learn about Paris' origins as a Roman settlement as you pass through the Île de la Cité, where you will also see Notre Dame Cathedral. Pass by the imposing Arc de Triomphe, commemorating Napoleon's Grande Armée, and the École Militaire, where he graduated to Lieutenant. Continue down the elegant Champs-Élysées to the Place de la Concorde, dedicated to King Louis XV and the site where Louis XVI and Marie Antoinette were executed during the French Revolution. Then, head through the Quartier Latin where you will see the world-renowned Sorbonne University, and drive along the Seine for wonderful views of the Musée d'Orsay, the Louvre and the Pont de Neuf, or 'new bridge', which is ironically Paris' oldest. Finally, make a photo stop at the iconic Eiffel Tower, built for the 1889 World's Fair. Learn why this impressive, yet controversial, symbol of Paris was spared the wrecking ball in 1909.

Visit to the Notre Dame Cathedral

Victor Hugo once described the sculptured façade of Notre Dame as "a vast symphony in stone." However, had it not been for the creation of his famous hunchback, Quasimodo, the cathedral might never have returned to her former glory. Hugo's novel, *The Hunchback of Notre Dame* (1831), helped inspire a 23-year restoration of the cathedral that began in 1841. Step inside to admire her stained-glass rose windows and seemingly weightless vaulted ceilings. Built between 1163-1361 over the remains of an ancient Roman temple, it was here that Napoleon crowned himself emperor in 1804.

Free time in Paris

Enjoy free time for your own explorations of Paris. You might wish to visit the Musée d'Orsay, the Rodin Museum, or the futuristic exhibits of the Pompidou Centre. Other possibilities are a visit to the Sacré-Cœur, where you can watch artists at work in the streets of Montmartre below, or a stroll

through the Latin Quarter. Or take part in the timeless Parisian tradition of people-watching over a cup of café au lait at a sidewalk café.

Overnight in Paris

Day 11

Saturday, March 19, 2011

Optional excursion to Versailles

Step back into le grand siècle as you experience the opulence of Versailles. Built under the orders of Louis XIV to be the most extravagant palace in the world, Versailles came to be a symbol of the gap between France's lavish royalty and its impoverished masses in the decades leading up to the 1789 Revolution. Today, you will tour the Royal Apartments, the historic Hall of Mirrors, and the elegantly landscaped gardens.

Visit Fragonard Perfume Museum

Galleries Lafayette

Take some time to explore and shop Galleries Lafayette which has made fashion come alive for more than a century and has 63 stores and 10 affiliated outlets.

Free time in Paris

Enjoy free time for your own explorations of Paris. You might wish to visit the Musée d'Orsay, the Rodin Museum, or the futuristic exhibits of the Pompidou Centre. Other possibilities are a visit to the Sacré-Cœur, where you can watch artists at work in the streets of Montmartre below, or a stroll through the Latin Quarter. Or take part in the timeless Parisian tradition of people watching over a cup of café au lait at a sidewalk café.

Overnight in Paris

Day 12

Sunday, March 20, 2011

EuroDisney

Say "Bonjour" to Mickey while you visit EuroDisney. Visit Adventureland and ride the Pirates of the Caribbean, or go to Fantasyland to see your favorite movie characters come to life and then race down Space Mountain to Discoveryland! Located beyond the suburbs of Paris you will find all the pleasures of Disney's Californian and Floridian predecessors.

Overnight in Paris

Day 13

Monday, March 21, 2011

Visit to the Louvre Museum

The Palais du Louvre, built to defend the city in the 13th century, now safeguards one of the world's greatest art collections. Enter the museum through world-renowned architect I.M. Pei's 1989 modernist glass pyramid. Inside, discover priceless antiquities from Egypt, Greece, Italy and Asia such as the statues of Venus de Milo and Nike of Samothrace, better known as Winged Victory. You'll also see some of the Louvre's most prized paintings by Renaissance and European masters, including Leonardo da Vinci's painting of the mysterious Mona Lisa.

Visit Van Cleef & Arpels Diamond Boutique

Free time in Paris

Enjoy free time for your own explorations of Paris. You might wish to visit the Musée d'Orsay, the Rodin Museum, or the futuristic exhibits of the Pompidou Centre. Other possibilities are a visit to the Sacré-Cœur, where you can watch artists at work in the streets of Montmartre below, or a stroll through the Latin Quarter. Or take part in the timeless Parisian tradition of people-watching over a cup of café au lait at a sidewalk café.

*Overnight in Paris***Day 14****Tuesday, March 22, 2011****Board your train to Amsterdam****EF walking tour of Amsterdam**

Stroll along the canal-lined streets of Amsterdam on our EF walking tour. Cross Dam Square, then pass by the Koninklijk Paleis (Royal Palace) and the Nieuwe Kerk (New Church), site of Dutch coronations.

Canal Cruise

Cruise the canals on board a glass-topped boat, the perfect way to become acquainted with the city. You will pass some of Amsterdam's most enchanting bridges, including those depicted in some of van Gogh's paintings. Afterwards, you'll visit a local diamond factory to learn more about this trade, central to the Dutch economy.

*Overnight in Amsterdam***Day 15****Wednesday, March 23, 2011****Guided sightseeing of Amsterdam**

A local guide introduces you to Amsterdam's most famous sights on a walk through the city. Pass the Westerkerk (West Church), where the remains of Rembrandt and his son are buried. The church also held the wedding of Queen Beatrix in 1966. Continue to lively Dam Square, a dam around the Amstel River created in the 13th century to prevent the Zuiderzee Sea from flooding the city. Now this bustling tourist area boasts the impressive Koninklijk Paleis (Royal Palace), once the home of the Dutch Royal Family; the National Monument; and the Nieuwekerk (New Church), where members of the Dutch Royal Family are officially inaugurated. See the Begijnhof, a lovely 14th-century courtyard, built as a sanctuary for the Begijnhofites, a Catholic sisterhood. Walk across the lifting bridge to Waterlooplein. Marvel at the views of the Amstel River as you cross the Magere Brug (Skinny Bridge). Although "magere" means skinny in Dutch and the bridge was quite thin when built, rumor says the bridge was actually named for the Magere sisters, living on opposite sides of the river, who built the bridge to make it easier to visit each other. Finally, you will see Rembrandtplein, a square packed with terrace cafés, diamond shops, nightclubs and hotels.

Visit to the Anne Frank House

Visit the Anne Frank House, where the young girl hid with her family from 1942 to 1944—and where she penned the poignant diary that has been translated into dozens of languages worldwide.

Volendam and Zaanse Schans

Join a special excursion to the village of Volendam. This lakeside region embodies the spirit of a nation that has won much of its land from the sea. Here, the locals still dress in traditional costume, with the women wearing white-winged caps and full skirts. The waterfront is a pleasant place for a stroll; as you walk you might wish to sample local specialties such as herring and Dutch waffles. Next, stop at the open-air museum of Zaanse Schans, where the Dutch traditional way of life and work is still preserved. Some of the finest working windmills in the country still produce flour and oil, as they have done for centuries.

Overnight in Amsterdam

Day 16

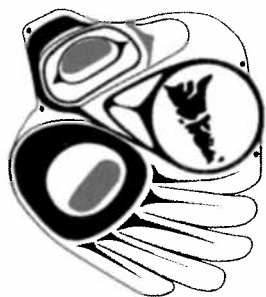
Thursday, March 24, 2011

Transfer to the airport for your return flight

Your tour director assists with your transfer to the airport, where you'll check in for your return flight home.

Itinerary is subject to change

For complete financial and registration details, please refer to the Booking Conditions at www.eftours.ca/bc.



**BOARD OF SCHOOL TRUSTEES
SCHOOL DISTRICT NO. 50
Haida Gwaii / Queen Charlotte**

OFFICE OF THE
CHIEF EXECUTIVE OFFICER
P.O. BOX 69
QUEEN CHARLOTTE CITY
B.C. V0T 1S0
TEL: 250 559-8471
FAX: 250 559-8849

FINANCE VOUCHER

REGULAR BOARD MEETING

BOARD MEETING:

January 25, 2010

AGENDA ITEM:

Finance Voucher December 31, 2010

The list of accounts payable is attached for your information. The following is a summary of accounts.

A/P Cheques Computer Generated	December 31, 2010	\$207,756.43	
ePayments	December 31, 2010	\$100,765.82	
TOTAL Accounts Payable..... December 31, 2010			\$308,522.25
Teachers	15-Dec	\$209,576.25	
AO/Exempt	15-Dec	\$61,559.17	
			\$271,135.42
CUPE	4-Dec	\$50,750.59	
Casuals	4-Dec	\$12,706.90	
TOC's	4-Dec	\$6,362.07	
CUPE	18-Dec	\$53,751.52	
Casuals	18-Dec	\$10,403.13	
TOC's	18-Dec	\$4,684.89	
			\$138,659.10
TOTAL Payroll..... December 31, 2010			\$409,794.52
TOTAL A/P and Payroll			\$718,316.77

RECOMMENDATION:

1. THAT the Board of School Trustees receive for information Accounts Payable and Payroll totaling **\$718,316.77** for the month of December

MEMORANDUM

**SCHOOL
DISTRICT NO. 50
Haida Gwaii**

TO **Ken Campbell**
Secretary-Treasurer

FROM **Moira Dubasov**
Accountant

SUBJECT: **Teachers Payroll for..... December**

DATE 11-Jan-11

Period Ending	Pay Period	Payroll Group	Net Amount
15-Dec	PP#1-12	Teachers	\$ 209,576.25
15-Dec	PP#1-12	AO/Exempt	\$ 61,559.17
Total Net Pay			\$271,135.42

MEMORANDUM

**SCHOOL
DISTRICT NO. 50
Haida Gwaii**

TO Ken Campbell
Secretary-Treasurer

FROM Moira Dubasov
Accountant

SUBJECT: Non-Teachers Payroll for... December

DATE 11-Jan-11

Period Ending	Pay Period	Payroll Group	Net Amount
4-Dec	PP #2-25	CUPE	\$ 50,750.59
4-Dec	PP #2-25	Casuals	\$ 12,706.90
4-Dec	PP #2-25	TOC's	\$ 6,362.07
18-Dec	PP #2-26	CUPE	\$ 53,751.52
18-Dec	PP #2-26	Casuals	\$ 10,403.13
18-Dec	PP #2-26	TOC's	\$ 4,684.89
Total Net Pay			\$ 138,659.10

SCHOOL DISTRICT NO. 50
eREGISTER AS OF DECEMBER 31, 2010

DATE		SUPPLIER	NUMBER	AMOUNT
12/2/2010	210	Apple Canada Inc. C3120	2488	\$2,580.92
12/2/2010	210	Atwell Family Foods	2489	\$359.36
12/2/2010	210	BC Principals & Vice Principals'	2490	\$691.25
12/2/2010	210	CUPE - Local 2020	2491	\$3,120.84
12/2/2010	210	Haida Gwaii Teachers' Association	2492	\$2,195.86
12/2/2010	210	Haida Gwaii PVPA Association	2493	\$180.00
12/2/2010	210	Knowbuddy Resources	2494	\$356.06
12/2/2010	210	Administrative Officers Pro D	2495	\$1,640.00
12/2/2010	210	Dennis S. Baran	2496	\$508.85
12/2/2010	210	Freda P. Davis	2497	\$332.50
12/2/2010	210	Moira Dubasov	2498	\$596.19
12/2/2010	210	Vicki D. Ives	2499	\$163.40
12/2/2010	210	Joint Professional Development	2500	\$3,128.24
12/2/2010	210	Ioanne Yovanovich	2501	\$61.60
12/9/2010	211	Apple Canada Inc. C3120	2502	\$3,307.24
12/9/2010	211	Atwell Family Foods	2503	\$228.15
12/9/2010	211	Vanessa Cobbs	2504	\$195.00
12/9/2010	211	Eagle Transit LTD.	2505	\$750.50
12/9/2010	211	Steven Goffic	2506	\$2,010.00
12/9/2010	211	Grand & Tov	2507	\$343.47
12/9/2010	211	North Coast Supply Co. LTD.	2508	\$644.28
12/9/2010	211	Telus Communications (Bc) Inc.	2509	\$30.65
12/9/2010	211	Agnes L Mathers Principal's	2510	\$15.44
12/9/2010	211	Rvan Brown	2511	\$90.00
12/9/2010	211	Elizabeth A. Condrotte	2512	\$718.20
12/9/2010	211	Tawni-Marie Davidson	2513	\$109.00
12/9/2010	211	Marv L Disney	2514	\$90.00
12/9/2010	211	L. Alison Gear	2515	\$620.34
12/9/2010	211	David M. Greenall	2516	\$207.20
12/9/2010	211	Vicki D. Ives	2517	\$142.25
12/9/2010	211	Cheryl L. Mackenzie	2518	\$170.00
12/9/2010	211	Michael Muller	2519	\$85.00
12/9/2010	211	Queen Charlotte School Principals	2520	\$300.00
12/9/2010	211	Lynn Scott	2521	\$116.36
12/9/2010	211	Warren Weslev	2522	\$45.00
12/9/2010	211	Annette Wilson	2523	\$25.00
12/10/2010	212	Blackwater Excavation & Landscapin	2524	\$3,920.00
12/20/2010	213	Apple Canada Inc. C3120	2525	\$637.06
12/20/2010	213	Atwell Family Foods	2526	\$722.21
12/20/2010	213	BC Principals & Vice Principals'	2527	\$691.25
12/20/2010	213	Coastal Propane Inc.	2528	\$25,768.46
12/20/2010	213	Eagle Transit LTD.	2529	\$425.60
12/20/2010	213	Grand & Tov	2530	\$605.05
12/20/2010	213	Haida Gwaii PVPA Association	2531	\$180.00
12/20/2010	213	North Arms Transportation LTD.	2532	\$11,522.51
12/20/2010	213	Officeworks Plus	2533	\$72.52
12/20/2010	213	Port Air Cargo	2534	\$225.00
12/20/2010	213	Sun Life Of Canada	2535	\$716.28
12/20/2010	213	Telus Communications (Bc) Inc.	2536	\$4,314.04
12/20/2010	213	Administrative Officers Pro D	2537	\$1,640.00
12/20/2010	213	Agnes L Mathers Principal's	2538	\$50.00
12/20/2010	213	Dennis S. Baran	2539	\$576.73
12/20/2010	213	Rvan Brown	2540	\$90.00
12/20/2010	213	Ken Campbell	2541	\$672.10
12/20/2010	213	Joint Professional Development	2542	\$3,260.40

SCHOOL DISTRICT NO. 50
eREGISTER AS OF DECEMBER 31, 2010

DATE		SUPPLIER	NUMBER	AMOUNT
12/20/2010	213	Ian I. Keir	2543	\$181.49
12/20/2010	213	Claudette L Lavoie	2544	\$44.74
12/20/2010	213	Port Clements School Principal	2545	\$1,999.01
12/20/2010	213	Leighann Rodger	2546	\$113.00
12/20/2010	213	Robert Vogstad	2547	\$70.50
12/20/2010	213	Warren Weslev	2548	\$236.00
12/20/2010	213	Ioanne Yovanovich	2549	\$828.51
12/21/2010	214	Apple Canada Inc. C3120	2550	\$666.62
12/21/2010	214	CUPE - Local 2020	2552	\$3,091.86
12/21/2010	214	Haida Gwaii Teachers' Association	2554	\$2,297.72
12/21/2010	214	Masset Haida Television Society	2555	\$140.00
12/21/2010	214	Northwest Community College	2557	\$83.58
12/21/2010	214	Telus	2558	\$267.25
12/21/2010	214	Telus Communications (Bc) Inc.	2559	\$31.38
12/24/2010	214	Steven Goffic	2553	\$2,010.00
12/31/2010	214	Blackwater Excavation & Landscapin	2551	\$2,536.80
12/31/2010	214	Northern Shores Lodging & Catering	2556	\$3,920.00
TOTAL				\$100,765.82

SCHOOL DISTRICT NO. 50
CHEQUE REGISTER AS OF DECEMBER 31, 2010

CHEQUE NUMBER	DATE	SUPLIER	AMOUNT
51797	12/2/2010	Aboriginal Education-SD54	\$210.00
51798	12/2/2010	Artstarts IN Schools	\$1,964.00
51799	12/2/2010	BC Teachers' Federation	\$11,499.00
51800	12/2/2010	Delmas Co-Operative	\$28.96
51801	12/2/2010	Family Services Of Greater Van	\$3,379.24
51802	12/2/2010	FirstCanada ULC	\$35,451.36
51803	12/2/2010	Gravdon Security Svstems	\$301.86
51804	12/2/2010	Great West Life	\$1,115.22
51805	12/2/2010	Henry's Bus Service	\$967.13
51806	12/2/2010	Hunter Fire Protection Service	\$330.40
51807	12/2/2010	Industrial Alliance Pacific	\$15.66
51808	12/2/2010	Jack Littrell Photography	\$250.00
51809	12/2/2010	London Life Insurance Company	\$3,607.92
51810	12/2/2010	Monk Office Supply LTD.	\$394.00
51811	12/2/2010	Mtr Control Systems LTD.	\$298.12
51812	12/2/2010	New Generation Technologies In	\$295.68
51813	12/2/2010	Observer Publishing CO LTD.	\$307.06
51814	12/2/2010	Pacific Blue Cross	\$11,931.21
51815	12/2/2010	Power Of Ten Educational Consu	\$120.90
51816	12/2/2010	Purolator Courier LTD.	\$59.43
51817	12/2/2010	Rootham Services Group Incl	\$672.00
51818	12/2/2010	Saanich Plumbing & Heating LTD	\$871.49
51819	12/2/2010	School Specialty Canada	\$781.60
51820	12/2/2010	SUPREME OFFICE PRODUCTS	\$588.94
51821	12/2/2010	Wiggv's	\$25.00
51822	12/2/2010	Xerox Canada Inc.	\$1,536.82
51823	12/2/2010	Axa Assurances Inc.	\$70.50
51824	12/2/2010	Petty Cash	\$370.21
51825	12/2/2010	Wayne Wilson	\$713.50
51826	12/9/2010	Aaron-Mark Services	\$2,445.17
51827	12/9/2010	Big Red Enterprises LTD.	\$1,787.12
51828	12/9/2010	Boreal Northwest	\$54.96
51829	12/9/2010	Cartridge Solutions	\$483.73
51830	12/9/2010	Catsports	\$93.52
51831	12/9/2010	Charlotte Island Tires LTD.	\$984.16
51832	12/9/2010	Chrysler Financial	\$4,087.04
51833	12/9/2010	Classroom Ready	\$257.60
51834	12/9/2010	Ben Davidson	\$50.00
51835	12/9/2010	Delmas Co-Operative	\$693.24
51836	12/9/2010	Michael Fladmark	\$174.00
51837	12/9/2010	Island Meat & Sausage	\$159.20
51838	12/9/2010	Anna Larose	\$190.00
51839	12/9/2010	Living And Learning School	\$6,880.00
51840	12/9/2010	London Life Insurance Company	\$1,816.99
51841	12/9/2010	Long & McQuade	\$246.40
51842	12/9/2010	Minister Of Finance	\$58.24
51843	12/9/2010	Morneau Sobeco Inc., IN Trust	\$1,662.01
51844	12/9/2010	Nelson Education LTD.	\$57.37
51845	12/9/2010	Northern Health Authority	\$3,200.00

**SCHOOL DISTRICT NO. 50
CHEQUE REGISTER AS OF DECEMBER 31, 2010**

CHEQUE NUMBER	DATE	SUPLIER	AMOUNT
51846	12/9/2010	Pco Services Inc.	\$284.48
51847	12/9/2010	Purolator Courier LTD.	\$41.23
51848	12/9/2010	Queen B's Cafe	\$307.38
51849	12/9/2010	R & R Rewinding	\$565.42
51850	12/9/2010	Sandspit Services (Taxi)	\$1,282.40
51851	12/9/2010	School District No. 35 (Langle	\$231.78
51852	12/9/2010	Schoolhouse Publications Inc.	\$219.67
51853	12/9/2010	Seavue Glass LTD	\$3,212.16
51854	12/9/2010	SUPREME OFFICE PRODUCTS	\$22.18
51855	12/9/2010	Westpoint Automotive	\$202.62
51856	12/9/2010	George M Dawson - Petty Cash	\$381.25
51857	12/9/2010	Lisa M Gvorgv	\$182.00
51858	12/10/2010	Lori Corea	\$25.00
51859	12/10/2010	Pebt, IN Trust	\$10,149.52
51860	12/20/2010	Acklands - Granger Inc.	\$370.85
51861	12/20/2010	BC Hydro & Power Authority	\$14,220.46
51862	12/20/2010	C. And C. Beachy Contracting L	\$1,058.40
51863	12/20/2010	Chown Enterprises Inc.	\$145.60
51864	12/20/2010	City Centre Stores LTD.	\$96.27
51865	12/20/2010	Dave's Backhoe Service	\$268.80
51866	12/20/2010	Delmas Co-Operative	\$2,157.48
51867	12/20/2010	Echo Bay S & G Inc.	\$87.36
51868	12/20/2010	Yvette Marie Emerson	\$482.00
51869	12/20/2010	FirstCanada ULC	\$35,827.68
51870	12/20/2010	Great West Life	\$1,115.22
51871	12/20/2010	Jack Littrell Photography	\$275.00
51872	12/20/2010	Kone Inc.	\$1,139.61
51873	12/20/2010	Maxwell Paper Canada Inc.	\$169.56
51874	12/20/2010	Minister Of Finance	\$508.18
51875	12/20/2010	North Pacific Seaplanes LTD.	\$120.10
51876	12/20/2010	Paperdirect, Inc.	\$112.53
51877	12/20/2010	QCI Disposal Services	\$254.06
51878	12/20/2010	Oci Regional Recreation Commis	\$1,310.40
51879	12/20/2010	Wendy Riley	\$90.00
51880	12/20/2010	Sandspit Services (Taxi)	\$336.00
51881	12/20/2010	Leanne Seifert	\$630.00
51882	12/20/2010	Shanahan's Limited	\$755.31
51883	12/20/2010	Torrie St. Louis	\$400.00
51884	12/20/2010	Super Valu Store No. 43	\$278.71
51885	12/20/2010	Tlc Automotive Services LTD.	\$1,098.74
51886	12/20/2010	Western Campus Resources	\$62.77
51887	12/20/2010	Xerox Canada Inc.	\$3,518.81
51888	12/20/2010	Kyle Yovanovich	\$455.50
51889	12/20/2010	Axa Assurances Inc.	\$70.50
51890	12/20/2010	Canadian Western Trust	\$5,095.00
51891	12/20/2010	George M Dawson Principal IN T	\$200.00
51892	12/20/2010	Wayne Wilson	\$125.35

**SCHOOL DISTRICT NO. 50
CHEQUE REGISTER AS OF DECEMBER 31, 2010**

CHEQUE NUMBER	DATE	SUPLIER	AMOUNT
51893	12/21/2010	Andrew Sheret LTD	\$44.80
51894	12/21/2010	BC Teachers' Federation	\$11,866.81
51895	12/21/2010	London Life Insurance Company	\$1,596.46
51896	12/21/2010	Pacific Controls LTD.	\$196.99
51897	12/21/2010	Pearson Canada Assessment Inc.	\$114.01
51898	12/21/2010	Purolator Courier LTD.	\$37.83
51899	12/21/2010	Saanich Plumbing & Heating LTD	\$393.23
51900	12/21/2010	Skeena QC Regional District (I	\$25.00
TOTAL			\$207,756.43

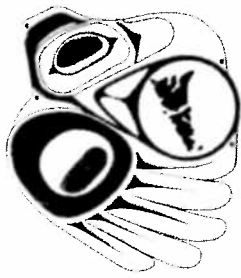
2010/11 FIRST NATION BILLING RATES

	Total 2010/11 FTE ¹	District Funding Allocation ²	Provincial Learning Network (PLNet) ³	Pay Equity	BCeSIS ⁴	Annual Facility Grant ⁵	Total District Funding	First Nation Billing Rate	School-Age FTE	Adult FTE
06 SOUTH EAST KOOTENAY	5,240,1250	\$ 49,279,050	\$ 219,048	\$ 457,171	\$ 48,208	\$ 662,578	\$ 50,666,055	\$ 9,669	5,238,6250	1,5000
06 ROCKY MOUNTAIN	3,149,4375	31,047,873	131,576	207,823	31,654	452,049	31,870,974	10,120	3,146,6875	2,7500
08 KOOTENAY LAKE	4,953,7500	49,604,304	206,540	300,996	43,956	645,472	50,801,268	10,255	4,939,5000	14,2500
10 ARROW LAKES	559,5625	7,208,878	23,398	40,560	5,817	144,183	7,422,836	13,265	559,5625	
19 REVELSTOKE	988,4375	9,955,385	41,315	101,498	10,172	150,913	10,259,283	10,379	988,0625	0,3750
20 KOOTENAY-COLUMBIA	3,895,1250	35,938,751	162,035	248,239	37,770	447,575	36,834,370	9,457	3,875,1250	20,0000
22 VERNON	8,353,3125	70,412,905	348,951	85,865	1,600	823,060	71,672,381	8,580	8,345,3125	8,0000
23 CENTRAL OKANAGAN	21,567,4375	169,555,205	901,037	1,238,323	190,195	1,813,108	173,697,868	8,054	21,548,6875	18,7500
27 CARIBOO-CHILCOTIN	5,286,6250	52,948,320	220,036	665,837	53,751	719,719	54,607,663	10,329	5,262,2500	24,3750
28 QUESNEL	3,443,8750	34,494,156	143,145	379,632	32,039	413,473	35,462,445	10,297	3,423,3750	20,5000
33 CHILLIWACK	12,583,8750	101,889,474	522,194	864,624	111,053	1,053,974	104,441,319	8,300	12,488,5000	95,3750
34 ABBOTSFORD	18,720,7500	148,342,465	782,110	1,180,014	178,372	1,597,531	151,018,492	8,067	18,704,5000	16,2500
35 LANGLEY	18,405,7500	145,370,551	768,103	551,875	178,252	1,570,299	148,439,080	8,065	18,369,5000	36,2500
36 SURREY	66,787,6254	526,116,845	2,779,926	6,861,224	640,438	5,453,118	541,851,551	8,113	66,483,1254	304,5000
37 DELTA	15,693,7508	125,533,082	654,029	2,171,545	3,773	1,419,697	129,782,126	8,270	15,641,3758	52,3750
38 RICHMOND	21,832,2500	172,052,711	910,657	2,215,706	202,455	1,914,185	177,295,714	8,121	21,778,7500	53,5000
39 VANCOUVER	53,461,6875	435,704,681	2,210,835	7,294,124	491,460	5,166,741	450,867,841	8,433	52,873,0625	588,6250
40 NEW WESTMINSTER	6,324,8750	50,222,999	253,764	521,853	6,468	544,549	51,549,633	8,150	6,068,8750	256,0000
41 BURNABY	23,662,0000	186,233,203	985,436	1,441,995	226,178	2,149,203	191,036,015	8,074	23,567,1250	94,8750
42 MAPLE RIDGE	14,025,5000	111,831,299	584,079	1,874,965	139,233	1,194,729	115,624,305	8,244	13,968,5000	57,0000
43 COQUITLAM	30,115,7500	232,084,605	1,255,798	706,353	293,874	2,631,000	236,971,629	7,869	30,032,9375	82,8125
44 NORTH VANCOUVER	15,364,9379	122,464,724	641,427	2,966,047	148,515	1,445,851	127,666,564	8,309	15,340,0004	24,9375
45 WEST VANCOUVER	6,487,0000	51,001,142	271,159	678,422	61,630	617,295	52,629,648	8,113	6,484,8750	2,1250
46 SUNSHINE COAST	3,205,5625	33,327,422	133,787	510,381	32,714	453,854	34,458,158	10,749	3,199,5625	6,0000
47 POWELL RIVER	2,144,5000	21,250,818	88,907	243,304	20,523	283,803	21,887,356	10,206	2,126,2500	18,2500
48 SEA TO SKY	4,013,6875	35,768,397	167,575	371,793	40,499	441,274	36,789,538	9,166	4,007,6250	6,0625
49 CENTRAL COAST	231,7500	4,918,278	9,481	42,403	2,447	139,193	5,111,802	22,057	226,7500	5,0000
50 HAIDA GWAI	662,2500	9,711,434	27,268	139,874	6,656	254,853	10,140,085	15,312	652,1250	10,1250
51 BOUNDARY	1,375,3125	15,717,834	57,429	105,245	13,560	261,685	16,155,753	11,747	1,373,4375	1,8750
52 PRINCE RUPERT	2,262,6250	25,499,725	93,883	706,027	20,926	313,131	26,633,692	11,771	2,245,2500	17,3750
53 OKANAGAN-SIMILKAMEEN	2,357,2500	23,175,652	98,367	233,703	30,037	290,537	23,828,296	10,109	2,352,5000	4,7500
54 MILKLEY VALLEY	2,364,6250	23,123,314	98,681	225,459	21,507	327,044	23,796,005	10,063	2,360,0000	4,6250
55 PRINCE GEORGE	13,476,0000	119,418,638	560,276	2,271,692	121,473	1,540,377	123,912,456	9,195	13,399,2500	76,7500
56 NICOLA-SIMILKAMEEN	2,421,1875	24,349,388	100,158	120,216	21,097	290,498	24,881,356	10,277	2,395,3125	25,8750
59 PEACE RIVER SOUTH	4,024,3750	42,151,195	167,941	944,395	37,154	659,665	43,960,350	10,924	4,016,3750	8,0000
60 PEACE RIVER NORTH	5,428,0625	52,364,342	226,232	241,350	49,910	690,203	53,572,037	9,869	5,410,4375	17,6250
61 GREATER VICTORIA	18,822,6599	148,773,836	784,500	2,896,617	184,164	1,870,658	154,509,775	8,209	18,761,6599	61,0000
62 SOOKE	8,768,3750	73,258,387	364,315	931,052	88,870	777,590	75,420,214	8,601	8,712,7500	55,6250
63 SAANICH	7,368,5625	62,096,845	305,621	377,315	84,703	706,021	63,570,506	8,627	7,309,0625	59,5000
64 GULF ISLANDS	1,516,3125	15,954,447	62,109	102,398	15,211	239,246	16,373,411	10,798	1,485,3750	30,9375
67 OKANAGAN-SKAHA	6,223,9375	54,098,016	258,957	441,194	57,456	619,799	55,475,421	8,913	6,193,0625	30,8750
68 NANAIMO-LADYSMITH	13,625,8125	116,584,403	568,846	160,000	128,052	1,282,787	118,724,087	8,713	13,604,1875	21,6250
69 QUALICUM	4,194,5625	39,772,969	175,292	936,176	38,951	460,221	41,383,609	9,866	4,192,1875	2,3750
70 ALBERNI	4,045,6875	37,175,556	167,635	595,220	38,874	488,911	38,466,196	9,508	4,009,0625	36,6250
71 COMOX VALLEY	8,216,9375	70,492,019	341,589	451,831	75,105	809,020	72,169,564	8,783	8,169,2500	47,6875
72 CAMPBELL RIVER	5,263,3750	48,616,836	219,722	75,322	3,020	607,472	49,522,372	9,409	5,254,7500	8,6250
73 KAMLOOPS-THOMPSON	14,129,8125	120,088,024	588,409	575,959	133,518	1,620,338	123,006,249	8,705	14,072,0625	57,7500
74 GOLD TRAIL	1,318,7500	20,165,331	54,865	376,093	12,430	322,420	20,931,140	15,872	1,312,1250	6,6250
75 MISSION	6,129,9375	52,079,583	255,465	725,901	58,328	576,040	53,695,317	8,760	6,109,5625	20,3750
78 FRASER-CASCADE	1,837,1875	19,379,365	75,989	229,516	16,922	247,644	19,949,436	10,859	1,817,3125	19,8750
79 COWICHAN VALLEY	8,186,0000	69,904,712	341,453	363,682	72,683	886,686	71,569,217	8,743	8,166,0000	20,0000
81 FORT NELSON	860,3125	9,500,567	35,842	79,311	8,469	149,165	9,773,355	11,360	857,1875	3,1250
82 COAST MOUNTAINS	4,953,0000	50,698,308	206,441	1,160,795	42,972	711,677	52,820,193	10,664	4,937,1250	15,8750
83 NORTH OKANAGAN-SHUSWAP	6,717,1262	61,912,105	275,805	641,286	2,900	790,555	63,622,651	9,472	6,596,0012	12,11250
84 VANCOUVER ISLAND WEST	439,5626	6,847,391	18,223	55,087	3,824	182,870	7,107,395	16,169	435,8126	3,7500
85 VANCOUVER ISLAND NORTH	1,521,1250	18,378,215	63,291	115,216	13,312	342,552	18,912,585	12,433	1,513,6250	7,5000
87 STIKINE	201,5000	5,655,009	8,049	124,935	1,694	140,255	5,929,942	29,429	192,5000	9,0000
91 NECHAKO LAKES	4,610,5000	49,609,206	180,187	1,096,373	48,208	668,192	51,602,166	11,192	4,309,2500	301,2500
92 NISGA'A	413,1875	6,949,342	16,927	116,874	3,756	125,373	7,212,271	17,455	404,8125	8,3750
93 CONSEIL SCOLAIRE FRANCOPHONE	4,401,3750	58,015,934	183,882	100,251	39,054	398,089	58,737,210	13,345	4,397,6250	3,7500
99 PROVINCIAL SUMMARY	538,636,2253	\$ 4,566,075,451	\$ 22,400,000	\$ 50,878,937	\$ 4,727,839	\$ 54,000,000	\$ 4,698,080,227	\$ 8,722	535,705,5378	2,930,6875

Note:
We continue to review the 2010/11 Operating Grant Tables. We reserve the right to submit an adjusted First Nation Billing Rate

Data Sources:

- ¹ 2010/11 Operating Grant Autumn Recalculation = Table 3a Enrolment-Based Funding FTE (September) plus Table 5b Supplement for Unique Student Needs - Other - Adult Education - Funded FTE
- ² 2010/11 Operating Grant Autumn Recalculation = Table 2 Provincial Overview of Operating Grants (September)
- ³ 2011 PLNet Office \$### ## per pupil amount = \$22,400,000 * #### #### school-age FTE / ### #### Total school-age FTE)
- ⁴ 2010/11 BCeSIS (Allocation of Ministry Contribution)
- ⁵ 2010/11 Annual Facility Grant by Capital Management Branch



**BOARD OF EDUCATION
SCHOOL DISTRICT NO. 50
HAIDA GWAI**

107 Third Avenue, PO Box 69
Village of Queen Charlotte BC V0T 1S0
Tel: (250)559-8471 Fax: (250)559-8849
www.sd50.bc.ca

December 8th, 2010

Joanne Schroeder, Acting Deputy Director
Human Early Learning Partnership
Suite 440, 2206 East Mall
Library Processing Centre
Vancouver, BC
V6T 1Z3

Ms Schroeder:

My Early Learning Co-ordinator has informed me that due to budget restraints, HELP is unable to assist with paying for Teachers on Call for previously-trained teachers to participate in the mandatory EDI Report Back Session. I understand that some districts can account for this by combining the Report Back Session with EDI Completion time, but this is not possible in our District since the Report Back Session is incorporated into our annual Early Learning Forum. It always comes as a shock to me that ground-breaking work with sound merit to it gets undermined in this way and then there is the usual downloading of costs onto the service provider; it seems like no good deed goes unpunished, and in this particular case the District will be out around \$1000. Too often I have seen funding arrive for a good programme or initiative for our District, and then slowly get picked away at until its validity is under question.

Here in Haida Gwaii I think we have made tremendous progress in student success due in part to the commitment of our Early Learning team and partners such as you. I am frustrated to see you, and my team, involved in good work that gets dragged down in this way. Is there some person or entity you can suggest I contact to advocate for continuing support for HELP? I would like to offer whatever support I can for the work you are doing to support my team and our students.

Please contact me at the number above or at awilson@sd50.bc.ca if you would like to discuss this further. Thank you again for your commitment to our students and staff.

Sincerely,

Angus Wilson
Superintendent of Schools

PC

Brianne Grant, EDI Implementation Coordinator

**TRUSTEE EXPENDITURE REPORT
AS OF December 31, 2010**

	December	Year-To-Date	Budget	Available	% Spent
4-40-19000	2,761.42	17,767.04	41,237.00	23,469.96	43%
4-40-20000	49.42	316.75	750.00	433.25	42%
4-40-34000	3,200.12	12,644.79	43,120.00	30,475.21	29%
4-40-42000		9,270.64	10,000.00	729.36	93%
4-40-45000		0.00	1,200.00	1,200.00	0%
4-40-42025		5,146.02		(5,146.02)	
4-40-43000	56.83	170.41	1,000.00	829.59	17%
4-40-51000		2,062.79	1,231.00	(831.79)	168%
Total	6,067.79	47,378.44	98,538.00	51,159.56	48%